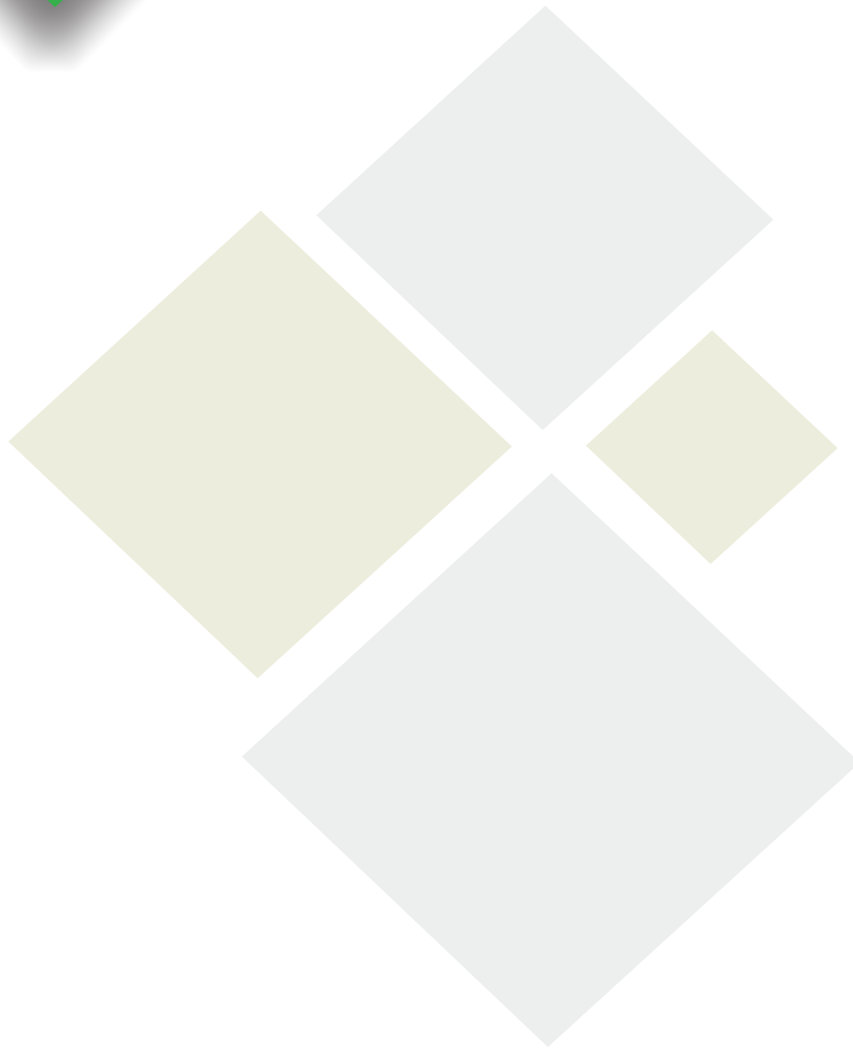
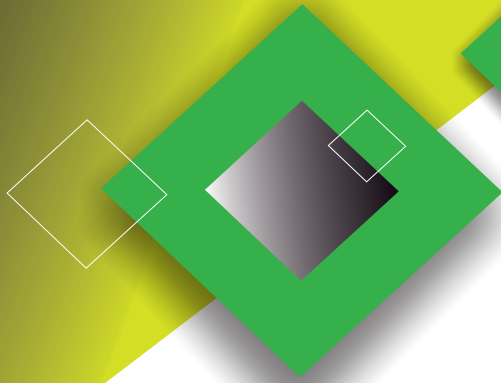


# COMPANY

## PROFILE





## TABLE OF CONTENT

Introduction.....	04
Company Overview.....	05
Mission Statement&Vision.....	06
Core Values .....	07
Functional Structure.....	08
Our Services.....	09
Key Activities.....	10
Our Objectives.....	11
Our Approach.....	15
Project Implementation .....	16
Major Project.....	17
Clients.....	18
Contacts.....	20



Breathing Life into Buildings  
& Infrastructure





## INTRODUCTION

“ Those who complete the course will do so only because they do not as fatigue sets in, convince themselves that the road ahead is still too long, the inclines too steep, the loneliness impossible to bear and the prize itself of doubtful value.”

**THABO MBEKI**



## COMPANY OVERVIEW

Moditi Consulting Engineers is a 100% black owned consulting company. We are committed to providing high quality innovative infrastructure and building services consulting which meets and satisfy our clients requirements and expectation. We are an entity which is dedicated to contributing to the growth of quality service to the markets we serve.

We are an **ISO 9001:2015** registered company.

### Our Motto

#### *Breathing Life into Buildings and Infrastructure*

We offer a full spectrum of consulting services covering all stages of the project portfolio including reporting, design, construction management and supervision, cost monitoring and quality control in the following:

- Building Services Engineering
  - Mechanical Engineering
  - Electrical Engineering
  - Civil and Structural Engineering
- Infrastructure Development
  - Mechanical Engineering
  - Electrical Engineering
  - Civil and Structural Engineering
- Bulk water reticulation
- Project Management
- Construction Management
- Energy Management
- Architecture
- Quantity Surveying



## MISSION STATEMENT ,VISION

### Mission Statement

Our mission is to be a world-class Infrastructure and Building Services Consulting infrastructure and building services consulting Company providing a service that will add sustainable value engineering solutions to the operation of its Clients in commerce, industry and the public sector.

To build long term relationships with our customers and clients and provide exceptional customer services by pursuing business through innovation and advanced technology

We strive to understand our Clients' needs and to deliver service excellence with uncompromising passion and quality.

### Vision

Our Vision is to be the infrastructure and building services consulting Company of choice in the markets we serve.



## OUR GOALS

### 1. OUR GOALS

- Regional expansion in the field of Mechanical , Electrical Consulting Engineering ,Quantity Surveying and Project management.
- Developing a strong base of key customers.
- Increase the assets and investments of the company to support the development of services.
- To build good reputation in the field of infrastructure and building services consulting and become a key player in the industry.

### 2. MANAGEMENT AND STAFF

We delight ourselves in a hands-on management philosophy, keen team-player spirit and above all a high level of quality workmanship and professionalism.

In addition to our competent staff complement, we also network with various other consulting practices in order to draw on additional resources and expertise when required. This, together with the personal involvement of the members, allows us to fully commit to a project as well as achieving a cross-pollination of ideas and concepts to the benefit of the Client.



## CORE VALUES

### **Integrity**

We integrate uncompromising honesty, integrity and business ethics into all aspects of our business functioning

### **Excellence**

Delivery of service excellence with uncompromising quality and passion.

### **Passion and Quality**

Pursuing uncompromising quality with passion and excellence.

### **Employees**

Considering our employees as our most valued resource, enhancing diversity in our workforce and working in partnership to create a better future for all of our people.

### **Solutions Orientated**

We grow through creativity, invention and innovation to all projects.

### **Customer Focus**

We believe in treating our customers with respect and faith and we strive to understand our Customers' needs and gaining preferred status by delivering sustainable solutions that fulfil their requirements.

### **Leadership**

Applying the vision, experience and energy of a strong leadership team to the pursuit of profitable growth.

### **Business Associates**

Fostering loyalty in our partners, suppliers, financiers and advisors.

### **Health, Safety & Environment**

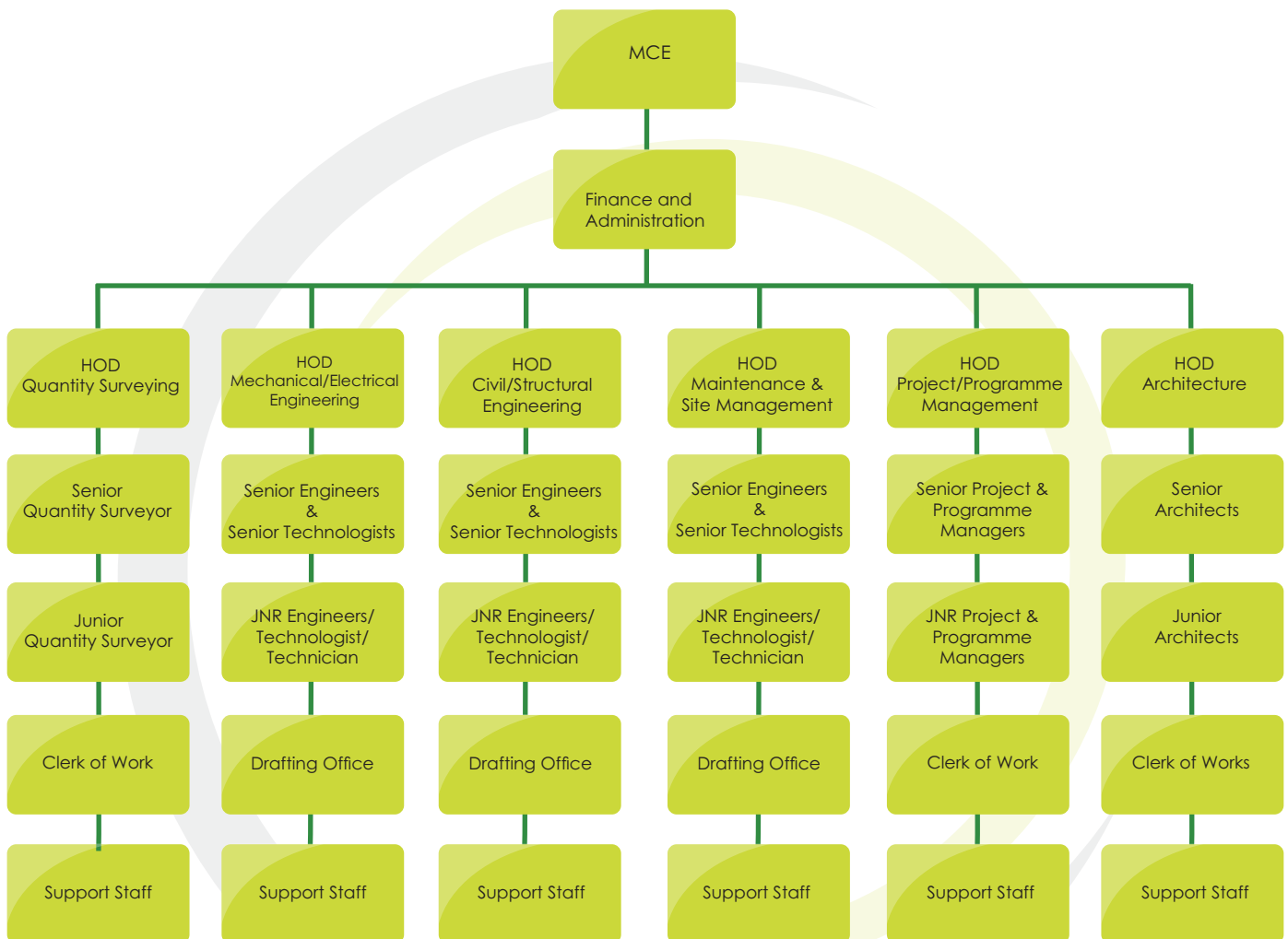
Integrating sound health, safety and environmental management into all aspects of our business activities.

### **Social Responsibility**

We participate in the social development along a sustainable growth path of the economies of all countries in which we operate.



## FUNCTIONAL STRUCTURE



### 1. OUR PROFESSIONAL REGISTRATIONS AND AFFILIATIONS

The company and its staff members are affiliated with the following bodies:

- Engineering Council of South Africa
- Building Commissioning Association
- South African Federation of Hospital Engineers
- ISO 9001: 2015
- GBCSA
- SAPOA





## OUR SERVICES



Mechanical Engineering



Energy Management



Electrical Engineering



Project Management



Construction Management



Architecture



Quantity Surveying





## KEY ACTIVITIES

### Project Management

- Project management plan preparation ? Master planning and concept analysis
- Facilitation of project planning workshops
- Consultant team selection and engagement
- Project brief development and needs analysis
- Design management
- Quality assurance and project management procedures
- Risk analysis and management
- Value engineering
- Contractor selection and appointment
- Tendering procedures and protocols
- Procurement controls and contracts
- Contract administration
- Co-ordination of project activities
- Authority compliance and approvals coordination
- Project monitoring and auditing
- Cost control project commissioning and handover

### Mechanical Engineering

- Air Conditioning and Ventilation
- Pipework Reticulation
- Thermal Insulation
- Vibration Control
- Public Health Services, Plumbing and Drainage
- Food Preparation, Cooking, Conveying and Serving Equipment
- Laundry Equipment
- Refrigeration Installation and Cold Storage
- Boiler Plant and Gas Installation
- Hydro Mechanical Equipment Design for pump
- Bulk water reticulation



## KEY ACTIVITIES

### Electrical Engineering

- Township Reticulation
- Street Lighting
- Incoming Electrical Supplies
- Electrical Sub-Stations
- Generating Plant Installations
- Electrical Distribution Systems
- Electric Lighting and Power Installations, including Lighting Fittings
- Lifts, Hoists and Escalators
- Telephone Equipment and Distribution Systems
- Fire Detection and Alarm Systems
- Public Address, Personnel Location and Call Systems
- Radio and Television Installations
- Security and Surveillance Systems
- UPS Systems and Computers
- Lightning Protection Systems
- Data and Telephone Installations

### Energy Management

- Development of Corporate Energy Strategies
- Feasibility Studies and Business Plans
- Technical Audits
- Electricity Recovery
- Energy Consumption Monitoring
- Implementation of Energy Management Programs



## KEY ACTIVITIES

### Quantity Surveyor

- Professional property and construction cost advice.
- Assist in developing clear project brief.
- Advising clients on strategies to archive viable and affordable projects.
- Management preparing estimates and financial viability studies & budget.
- Resolving Dispute between Contracting Parties.
- Prepare bills of quantities and other documentation to acquire fair and equitable tenders for projects.
- Preparing Insurance Replacement Estimates for all Kinds of Buildings.
- Negotiate building projects.
- Cost monitoring and reporting
- Preparation of its built of existing buildings

### Architecture

- Prepare, review and develop buildings
- Space planning
- Material components and finishes of buildings
- Check conformity of concept with the rights of land use
- Develop construction systems
- Incorporate all services and the work of consultants
- Local authority submissions
- Administration of contracts
- Master planning



## OUR OBJECTIVES

- To achieve the client's requirements and aspirations for the required facility and to ensure that stringent quality standards are attained,
- To manage the overall Professional process in a co-ordinated and pre-defined manner that is acceptable to the client.
- To ensure that the client is aware of all facets of the project and impending problems from inception to completion.
- To complete the project and deliverables within an agreed and defined programme and cost plan.
- To maintain an evaluation of risk and to manage the risk throughout the project life cycle in order to ensure that the client's exposure is maintained at the absolute minimum in terms of cost and time.
- To provide the client with a solution for their needs that reflects the lowest total cost of ownership for them.



## OUR APPROACH

- To have a "MAKE IT HAPPEN" approach and to provide a "HANDS ON" service to the client to understand, define and implement the client objectives.
- To focus upon project objectives and maintain a correct and clear understanding of the scope of work and each team member's contribution at all stages.
- To endeavour, wherever possible, to anticipate and timeously resolve problems rather than solve them only once they have manifested themselves.
- To apply effective and proven project management techniques for the delivery of the project within the agreed time and cost parameters.
- To apply proven cost management techniques that isolate unnecessary cost increases in project value.
- To promote a "PARTNERING" philosophy in project delivery. To "Value Engineer" design and needs solution.

In addition, the Project Leader shall report to the Client where appropriate, and will undertake the following services:

- Providing services in accordance with the Scope of work
- Administering the Contract as an agent of the Client, in accordance with the provisions of the Contract;
- Carry out such duties and functions as are required in terms of the Contract;
- Observe any requirement to obtain specific approval of the Client for the execution of any part of his/her functions and duties, such as shall be set out in the Contract;
- Exercise any authority given to him/her, in terms of the provisions of the Contract; and Use skill and care normally used by professionals providing similar services.
- Facilitate for effective project communication





## PROJECT IMPLEMENTATION



### OUR APPROACH TO PROJECT IMPLEMENTATION



Our Project functional structure



## PROJECTS PORTFOLIO

MODITI CONSULTING ENGINEERS PROJECT PORTFOLIO BY SECTOR					
SECTOR	DESCRIPTION	SPECIALITY	INSTALLATIONS	TOTAL VALUE OF WORK DONE MECHANICAL AND ELECTRICAL	TOTAL CONSTRUCTION COST
Health Care	Repair and Maintenance(RAMP)	Mechanical and Electrical	Boilers and steam distribution Hot water generation and distribution Laundry & Kitchen Equipment Air conditioning and ventilation Autoclave Installations General building electrical Nurse call systems, Fire detection & Access controls Fire protection system Plumbing and cold water storage Standby power and uninterrupted power systems Medium Volt and street lighting systems Refrigeration and Mortuary systems	+/- R371.3m	+/- R 371.3
Health Care		Project Management		+/-56.5m	+/-56.5m
Health Care	Refurbishment and New Buildings	Mechanical and Electrical	Boilers and steam distribution Hot water generation and distribution Laundry & Kitchen Equipment Air conditioning and ventilation Autoclave Installations General building electrical Nurse call systems, Fire detection & Access controls Fire protection system Plumbing and cold water storage Standby power and uninterrupted power systems Medium Volt and street lighting systems Refrigeration and Mortuary systems	+/-394.5m	+/-1.568B





## PROJECTS PORTFOLIO

MODITI CONSULTING ENGINEERS PROJECT PORTFOLIO BY SECTOR					
SECTOR	DESCRIPTION	SPECIALITY	INSTALLATIONS	TOTAL VALUE OF WORK DONE PM ,MECHANICAL AND ELECTRICAL	TOTAL CONSTRUCTION COST
<b>Housing</b>	Refurbishment and New Buildings	Mechanical and Electrical	Air conditioning and ventilation Hot water generation and distribution General building electrical Plumbing and cold water storage Medium Voltage Installations and street lighting systems, Fire detection and protection	+/-49.2 m	+/- 1.285 b
<b>Housing</b>		Project Management		+/- 1.4 B	+/- 1.4 b
<b>Schools and Libraries</b>	Refurbishment and New Buildings	Mechanical and Electrical	Air conditioning and ventilation Hot water generation and distribution General building electrical Plumbing and cold water storage Medium Voltage Installations and street lighting systems, Fire detection and protection	+/- 60 m	+/- 719 m
<b>Roads And Train stations</b>	Refurbishment and New Buildings	Mechanical and Electrical	Air conditioning and ventilation Hot water generation and distribution General building electrical Plumbing and cold water storage Medium Voltage Installations and street lighting systems, Fire detection and protection	+/-33.4 m	+/- 216.5 m
<b>Theaters and community halls</b>	Refurbishment and New Buildings	Mechanical and Electrical	Air conditioning and ventilation Hot water generation and distribution General building electrical Plumbing and cold water storage Medium Voltage Installations and street lighting systems Fire detection and protection	+/-8.5 m	+/-40 m



## PROJECTS PORTFOLIO

MODITI CONSULTING ENGINEERS PROJECT PORTFOLIO BY SECTOR					
SECTOR	DESCRIPTION	SPECIALITY	INSTALLATIONS	TOTAL VALUE OF WORK DONE PM ,MECHANICAL AND ELECTRICAL	TOTAL CONSTRUCTION COST
<b>Health Care</b>	Refurbishment and New Buildings	Civil and Structural	Full structural and civil services project and contract management	+/- 40 m	+/- 1.4 b
<b>Water and Sanitation</b>	Reticulations and new installations	Civil	Bulk Water and sanitation services link and internal water and sewer reticulation, water and sewer treatment works storm water, water reticulation models	+/- 12 m	+/- 214 m
<b>Road</b>	Upgrades and New Installations	Civill	Bridge planning and designs, urban and rural road planning and designs, pavements and access road rehabilitation designs Road marking and signage	+/- 10 m	+/- 148 m
<b>Geotechnology</b>	Geotechnical Investigations	Geotechnical	Soil analysis and profiling Lab testing	+/- 120 000	+/- 1.1 m

Our client's includes the following amongst others :

- Department of Health – North West
- Department of Education
- Department of Public Works
- Department of Infrastructure Development
- Department of Human settlement
- Newcastle Municipality
- Ekurhuleni Metropolitan Municipality
- Tshwane Metropolitan Municipality
- Old Mutual Properties
- Independent Development Trust
- South African Revenue Services
- Passenger Rail Agency of South Africa.
- Liberty Life

### Selected Client's Logos





## CONTACTS

### Head Office



+27 12 661 3600



+27 86 627 3647



44 Stead Avenue The Reeds  
Centurion 0157  
PO Box 3964, The Reeds 0158  
Registration No. 2013/130976/07  
Vat No. 4100253618  
**ISO 9001:2015**



admin@moditi.co.za



www.moditi.co.za

### Other Offices

#### WESTERN CAPE PROVINCE

Convention Towers  
Mezzanine Level 1&2  
Cnr Heerengracht Street  
and Coen Steytler  
Avenue, Foreshore  
Cape town  
Tel : 021 403 6300  
Fax : 086 627 3647  
Email: admin@moditi.co.za

#### KWAZULU NATAL PROVINCE

1st Floor Library life Building  
21 Aurora Drive  
Umhlanga  
4301  
Cell : 082 875 0354  
Fax : 086 627 3647  
Email: admin@moditi.co.za

#### NORTH WEST PROVINCE

Ground floor  
211 Beyer Naude Drive  
Rustenburg  
0299  
Cell : 082 875 0354  
Fax : 086 627 3647  
Email: admin@moditi.co.za

#### EASTERN CAPE PROVINCE

Ground floor  
14 Stewart Drive  
Berea  
East London  
Cell : 082 875 0354  
Fax : 086 627 3647  
Email: admin@moditi.co.za



+27 12 661 3600



+27 86 627 3647



44 Stead Avenue The Reeds  
Centurion 0157  
PO Box 3964, The Reeds 0158  
Registration No. 2013/130976/07  
Vat No.4100253618  
**ISO 9001:2008**



admin@moditi.co.za



www.moditi.co.za